

## Historical Aerial Fish House Counts - Otter Tail County

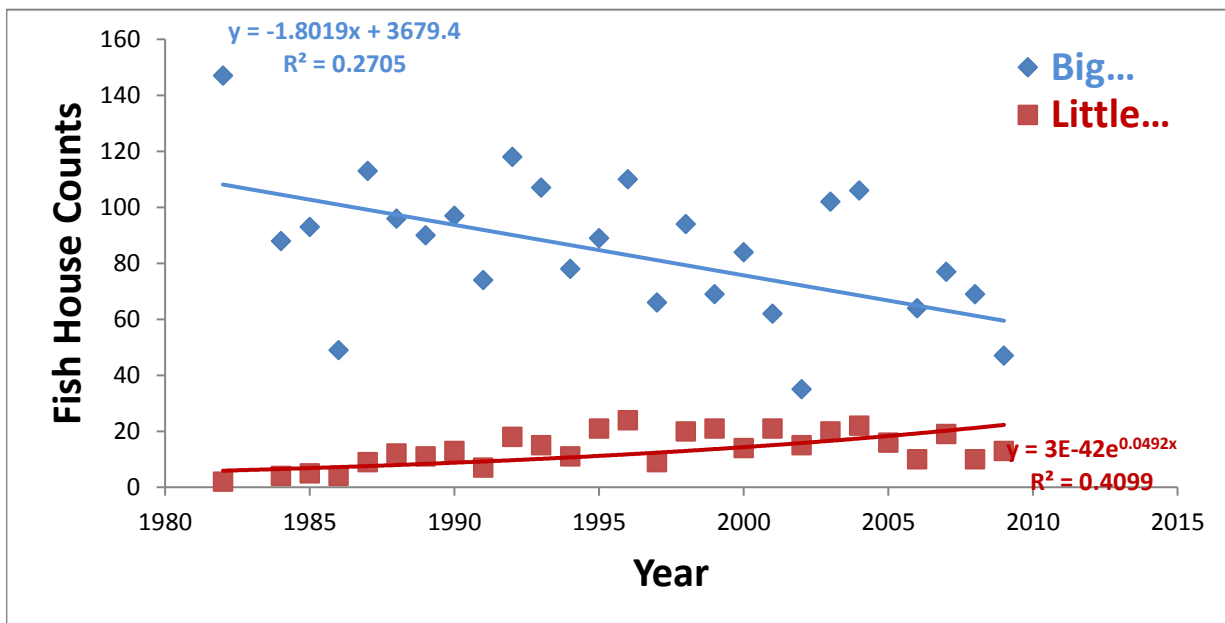
Lake	DOW #	1982	1984	1985	1986	1987	1988
Pelican, Big**	56-786	147	88	93	49	113	96
Pelican, Little	56-761	2	4	5	4	9	12

\*\* - Includes Fish Lake (56-768)

NOTE driving survey 1/11/15

Big Pelican 37 ice houses

Little Pelican 14 ice houses



<b>1989</b>	<b>1990</b>	<b>1991</b>	<b>1992</b>	<b>1993</b>	<b>1994</b>	<b>1995</b>	<b>1996</b>	<b>1997</b>
90	97	74	118	107	78	89	110	66
11	13	7	18	15	11	21	24	9

<b>1998</b>	<b>1999</b>	<b>2000</b>	<b>2001</b>	<b>2002</b>	<b>2003</b>	<b>2004</b>	<b>2005</b>	<b>2006</b>
94	69	84	62	35	102	106	16	64
20	21	14	21	15	20	22	16	10

<b>2007</b>	<b>2008</b>	<b>2009</b>	<b>Sum</b>	<b>No. Counts</b>	<b>Average</b>
77	69	47	2240	27	83.0
19	10	13	366	27	13.6