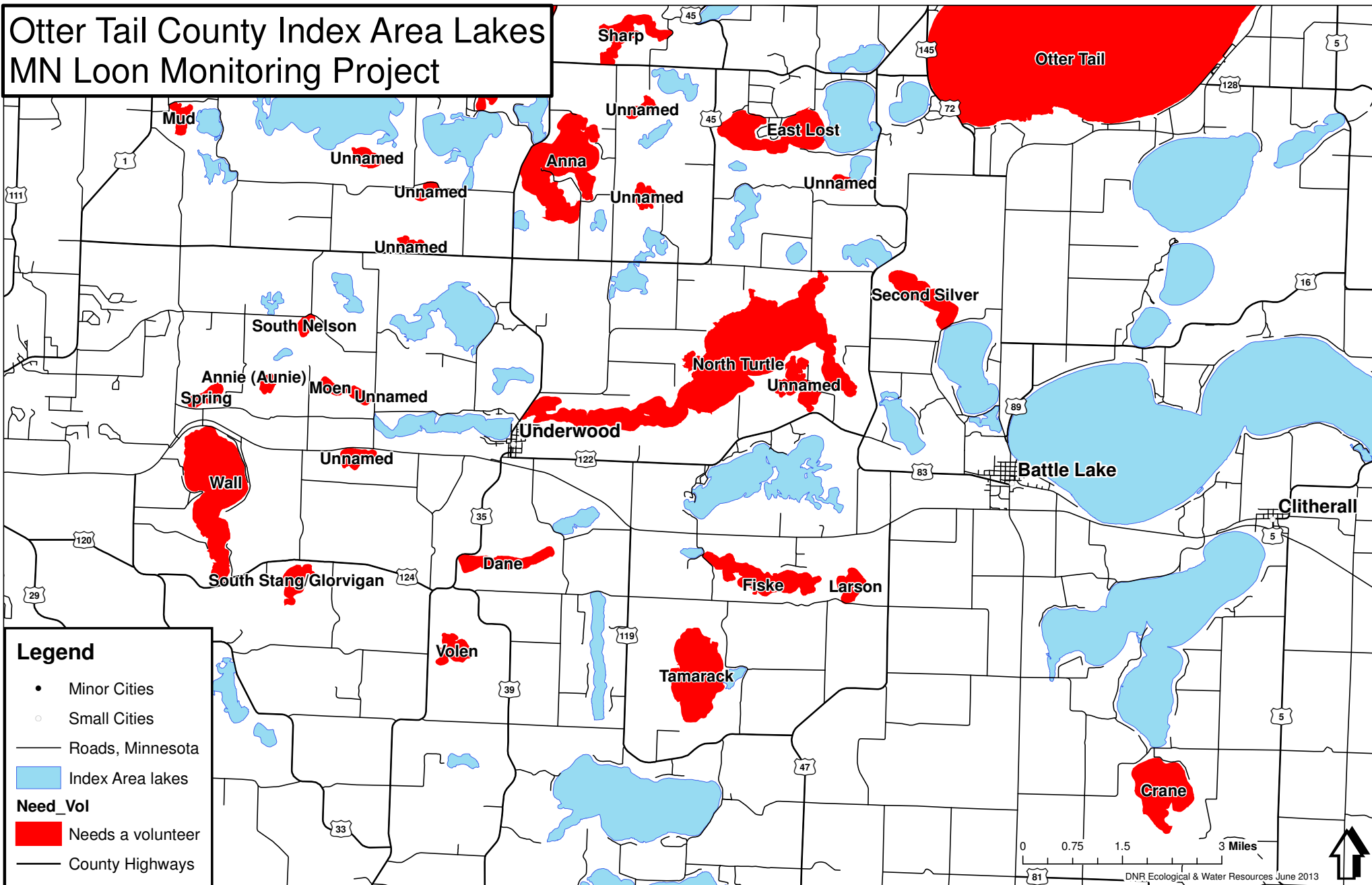


Otter Tail County Index Area Lakes MN Loon Monitoring Project



Minnesota Loon Monitoring Program
Otter Tail County Available Lakes

Lake Numb.	LakeName	Township	Range	Section	Size_ acre	Access*
56-448	Anna	133	41	9	581	Public access on southwest corner of lake
56-680	Annie (Aunie)	133	42	34	24	Contact landowner for access through private land
56-293	Crane	132	40	25	377	Contact landowner for access through private land
56-739	Crystal	135	42	28	107	Contact landowner for access through private land
56-427	Dane	132	41	8	120	View from road or contact landowners for permission to access property
56-378	East Lost	133	41	1	505	Carry-in public access on west end of lake
56-737	Eddy	135	42	26	155	Contact lakeshore owner for access
56-430	Fiske	132	41	11	260	Public access on south side of lake
56-695	Heilberger	134	42	10	212	Public access on south end of lake
56-691	Kempfer	134	42	4	33	Contact landowner for access through private land
56-287	Larson	132	40	7	83	Contact landowner for access through private land
56-714	Leeper	135	42	34	59	Contact landowner for access through private land
56-1520	Maine	134	41	16	33	View from road or access via narrow channel from Round Lake
56-679	Moen	133	42	35	30	Contact landowner for access through private land
56-662	Mud	133	42	9	76	Contact landowner for access through private land
56-379	North Turtle	133	40	V	1603	Public ramp landing on northwest corner of lake
56-242	Otter Tail	134	39	Various	13845	Four public accesses on east and west ends of lake
56-471	Peterson	134	41	3	148	View from road or contact landowners for permission to access property
56-475	Pickerel	134	41	Various	833	Public access on south side of lake
56-476	Round	134	41	15	132	Public access on east side of lake
56-302b	Second Silver	133	40	20	190	View from road or contact landowners for permission to access property
56-629	South Stang/Glorvigan	132	42	15	100	Contact landowner for access through private land
56-482	Sharp	134	41	34	160	Contact landowner for access through private land
56-676	South Nelson	133	42	26	28	View from road
56-682	Spring	133	42	33	56	Contact landowner for access through private land
56-708	Sproul	134	42	21	100	View from road
56-433	Tamarack	132	41	23	474	Contact landowner for access through private land
56-113	Unnamed	133	38	4	48	Contact landowner for access through private land
56-1137	Unnamed	134	42	27	17	Observe from road
56-446	Unnamed	133	41	3	45	Contact landowner for access through private land
56-452	Unnamed	133	41	15	48	Contact landowner for access through private land
56-567	Unnamed	133	41	18	69	Observe from road
56-657	Unnamed	132	42	2	69	View from road or get landowner permission

* We will provide contact information for private landowners on your data form

Minnesota Loon Monitoring Program
Otter Tail County Available Lakes

Lake Numb.	LakeName	Township	Range	Section	Size_ acre	Access*
56-683	Unnamed	133	42	36	25	Contact landowner for access through private land
56-696	Unnamed	134	42	15	29	View from road
56-713	Unnamed	134	42	3	41	Contact landowner for access through private land
56-743	Unnamed	135	42	33	26	Contact landowner for access through private land
56-686	Unnamed	134	42	2	14	Contact landowner for access through private land
56-380	Unnamed	133	40	25	107	Observe from road
56-1127	Unnamed	133	41	6	24	Contact landowner for access through private land
56-300	Unnamed	133	40	7	21	Contact landowner for access through private land
56-568	Unnamed	133	41	13	22	Contact landowner for access through private land
56-668	Unnamed	133	42	12	59	Contact landowner for access through private land
56-435	Volen	132	41	18	103	Contact landowner for access through private land
56-658	Wall	132	42	4	756	Public access on north end of lake
56-481	West Lost	134	41	29	915	Use small public access on east side of lake to access north portion of lake and contact private landowner to access south portion of lake
56-497	Zorns	135	41	29	52	View from road

* We will provide contact information for private landowners on your data form